

Santa Fe



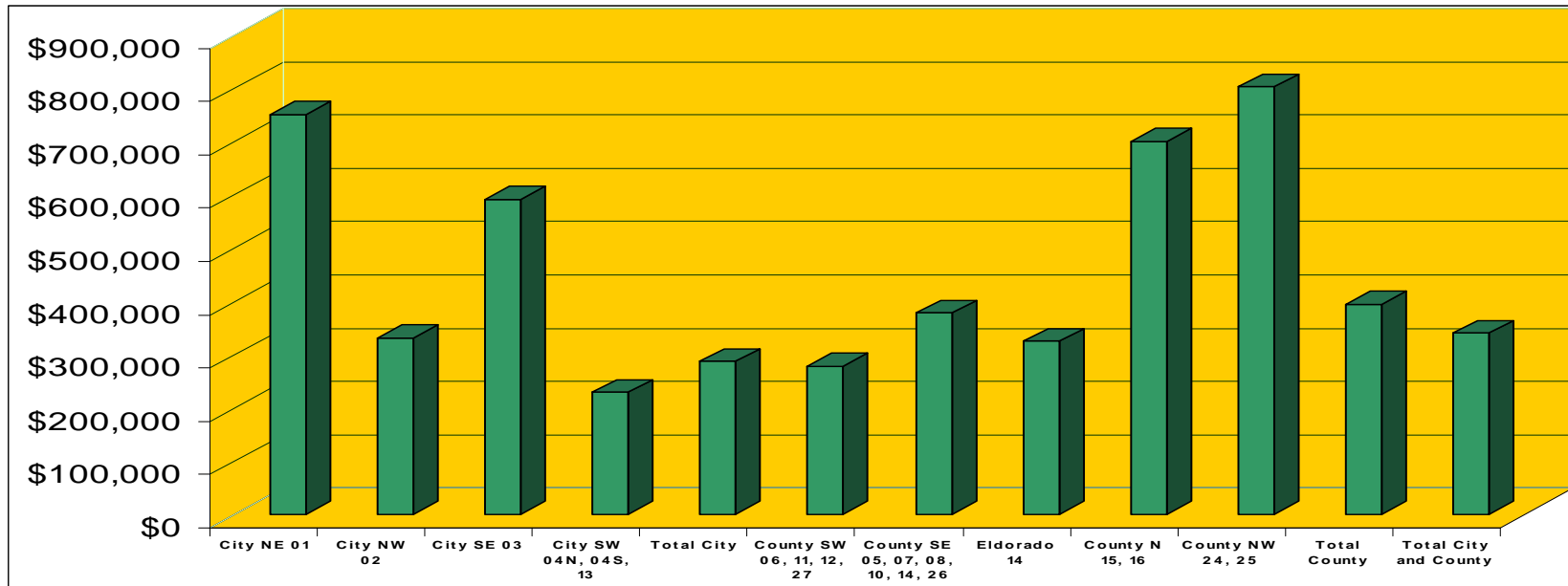
Association of REALTORS®

Third Quarter, 2009

Sales Statistics

Santa Fe Association of REALTORS®

Median Sold Prices, 3rd Quarter, 2009, Single Family



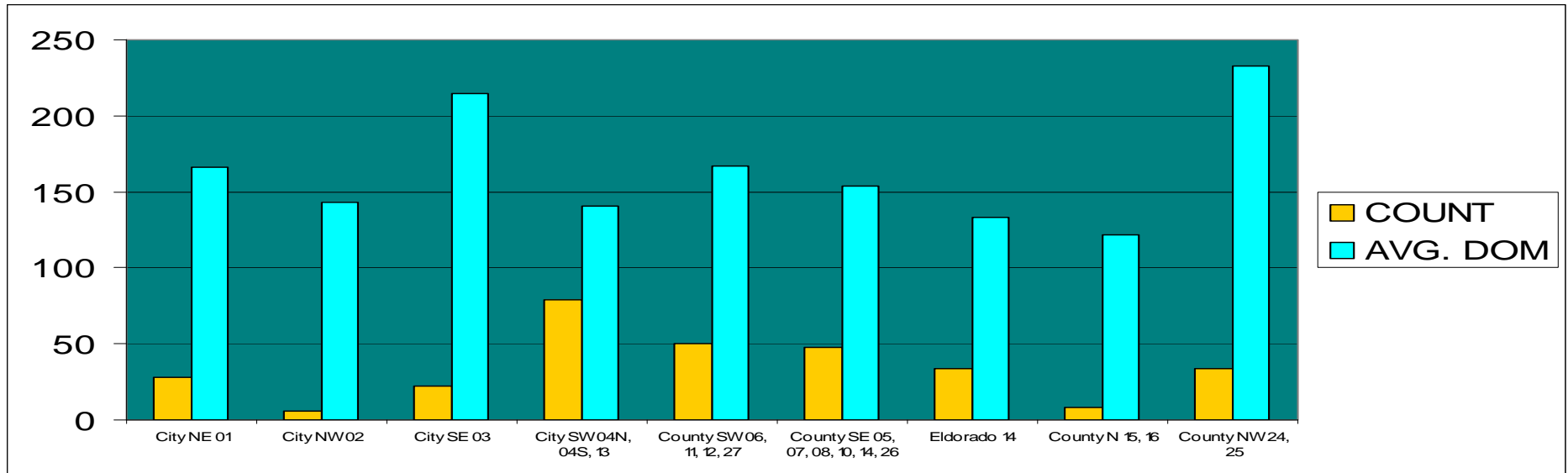
2009 3rd Quarter Median Prices by Area

City NE 01	\$750,000
City NW 02	\$331,350
City SE 03	\$592,500
City SW 04N, 04S, 13	\$229,000
Total City	\$287,000
County SW 06, 11, 12, 27	\$277,947
County SE 05, 07, 08, 10, 14, 26	\$377,965
Eldorado 14	\$325,000
County N 15, 16	\$700,000
County NW 24, 25	\$802,500
Total County	\$395,000
Total City and County	\$340,000

2008 3rd Quarter Median Prices by Area

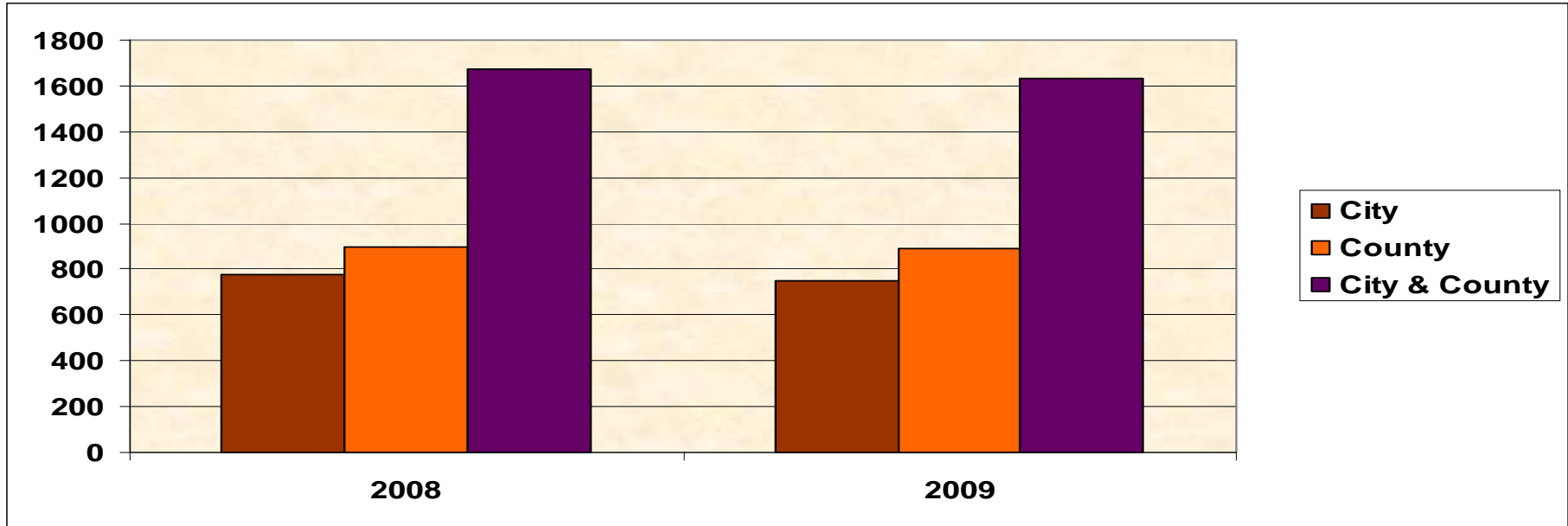
City NE 01	\$707,000
City NW 02	\$380,000
City SE 03	\$649,500
City SW 04N, 04S, 13	\$273,000
Total City	\$427,250
County SW 06, 11, 12, 27	\$330,000
County SE 05, 07, 08, 10, 14, 26	\$365,000
Eldorado 14	\$363,500
County N 15, 16	\$480,000
County NW 24, 25	\$910,000
Total County	\$425,000
Total City and County	\$425,500

Single Family DOM and Number Sold, 3rd Quarter, 2009



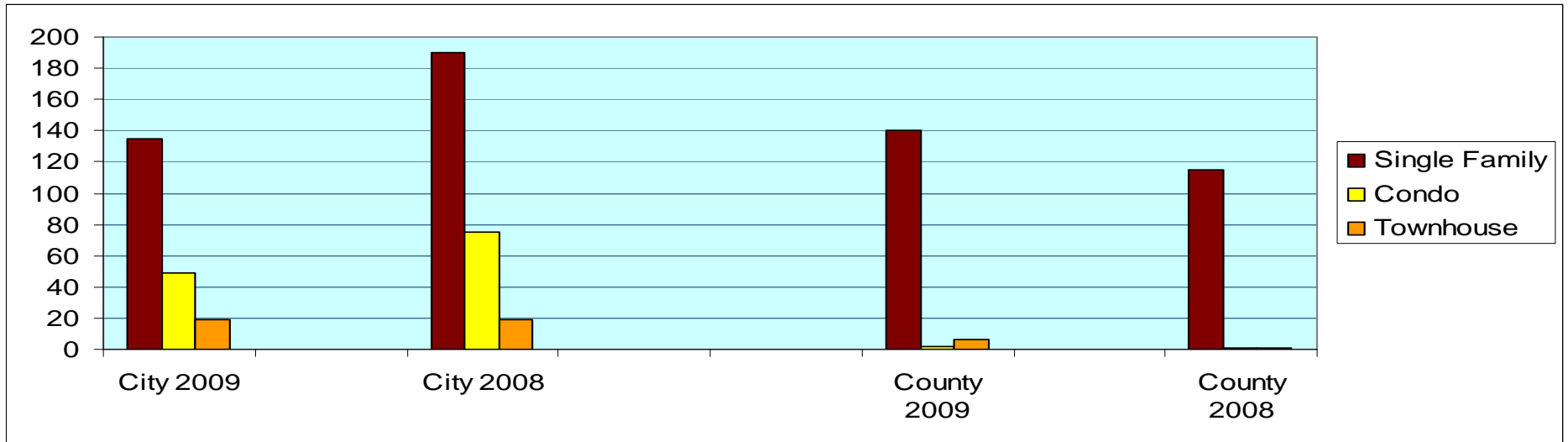
AREA	COUNT	AVG. DOM	AREA	COUNT	AVG. DOM
3Q 2009			3Q 2008		
City NE 01	28	166	City NE 01	40	174
City NW 02	6	143	City NW 02	17	164
City SE 03	22	215	City SE 03	52	166
City SW 04N, 04S, 13	79	141	City SW 04N, 04S, 13	81	127
County SW 06, 11, 12, 27	50	167	County SW 06, 11, 12, 27	29	174
County SE 05, 07, 08, 10, 14, 26	48	154	County SE 05, 07, 08, 10, 14, 26	47	142
Eldorado 14	34	133	Eldorado 14	28	141
County N 15, 16	8	122	County N 15, 16	6	166
County NW 24, 25	34	233	County NW 24, 25	33	234

ACTIVE LISTINGS SEPTEMBER 2009- SINGLE FAMILY



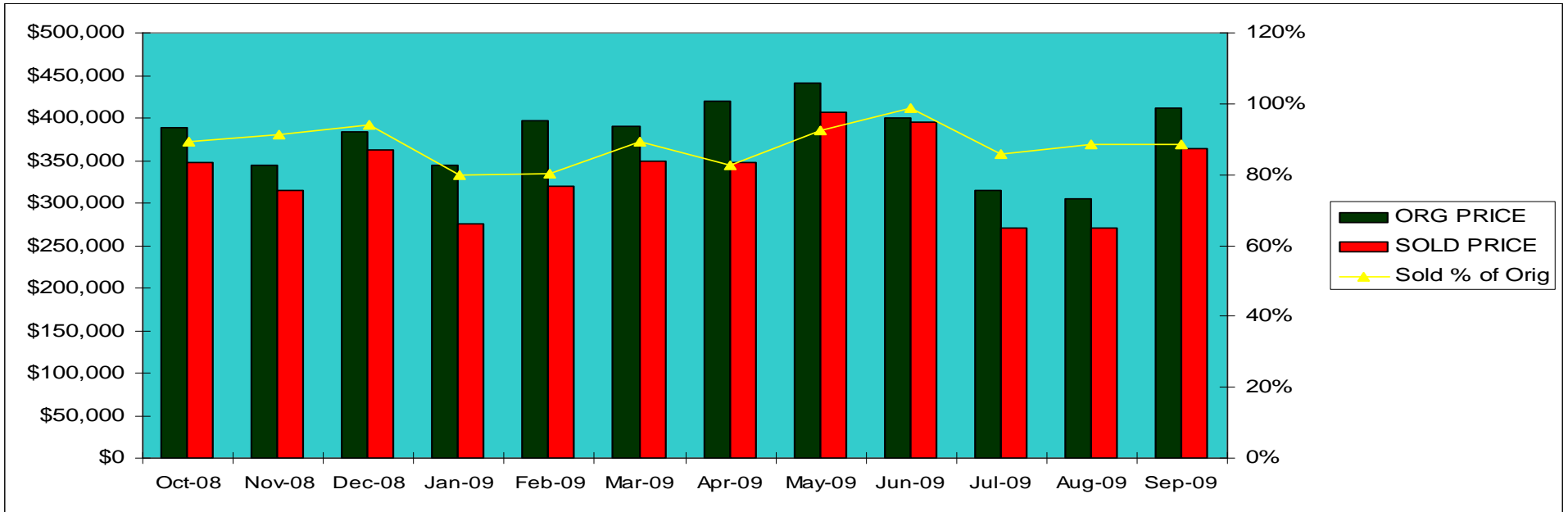
	Sep-09	Sep-08	Jun-09
City	747	775	786
County	888	896	908
City & County	1635	1671	1694

Total Units Sold Third Quarter 2008 vs 2009, City and County



	City 2009	City 2008		County 2009	County 2008
Single Family	135	190	Single Family	140	115
Condo	49	75	Condo	2	1
Townhouse	19	19	Townhouse	6	1

Single Family, City - % of Original Price



	ORG PRICE	SOLD PRICE	Sold % of Orig
Oct-08	\$388,500	\$347,500	89%
Nov-08	\$345,000	\$315,000	91%
Dec-08	\$384,000	\$361,750	94%
Jan-09	\$345,000	\$276,000	80%
Feb-09	\$397,000	\$319,000	80%
Mar-09	\$389,950	\$348,500	89%
Apr-09	\$420,000	\$347,000	83%
May-09	\$440,450	\$407,000	92%
Jun-09	\$399,900	\$395,000	99%
Jul-09	\$314,950	\$269,900	86%
Aug-09	\$304,450	\$270,000	89%
Sep-09	\$412,000	\$364,750	89%