

Santa Fe



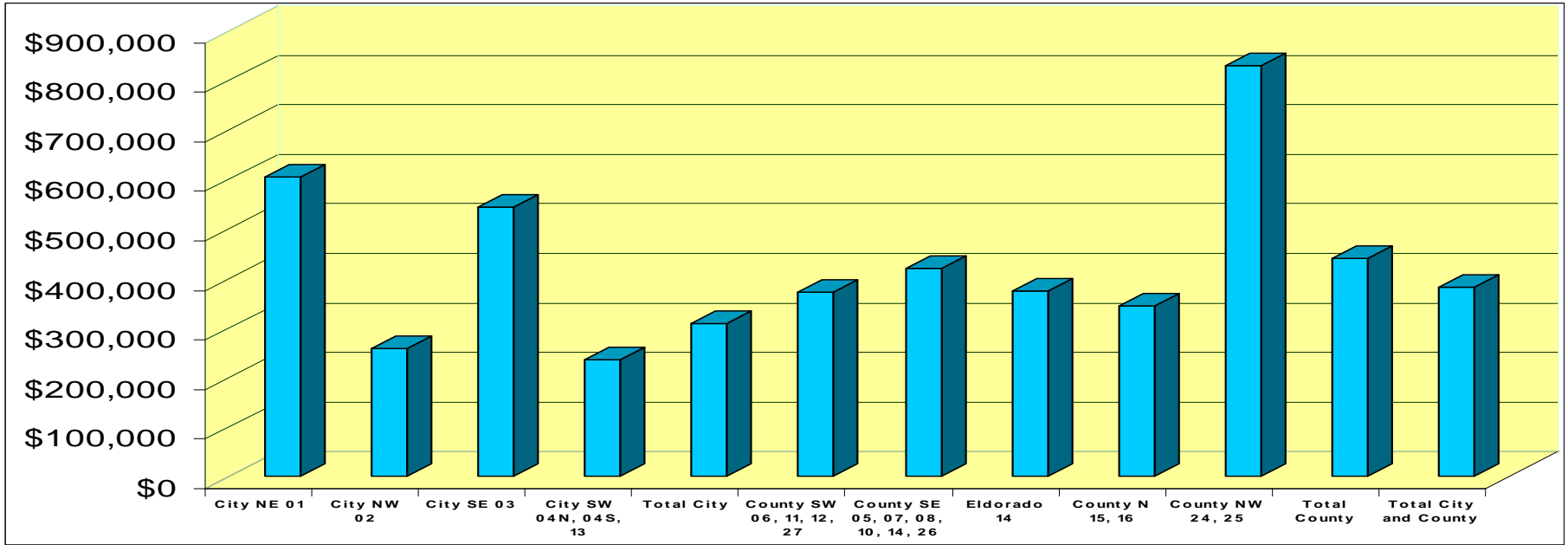
Association of REALTORS®

First Quarter, 2009

Sales Statistics

Santa Fe Association of REALTORS®

Median Sold Prices, 1st Quarter, 2009, Single Family



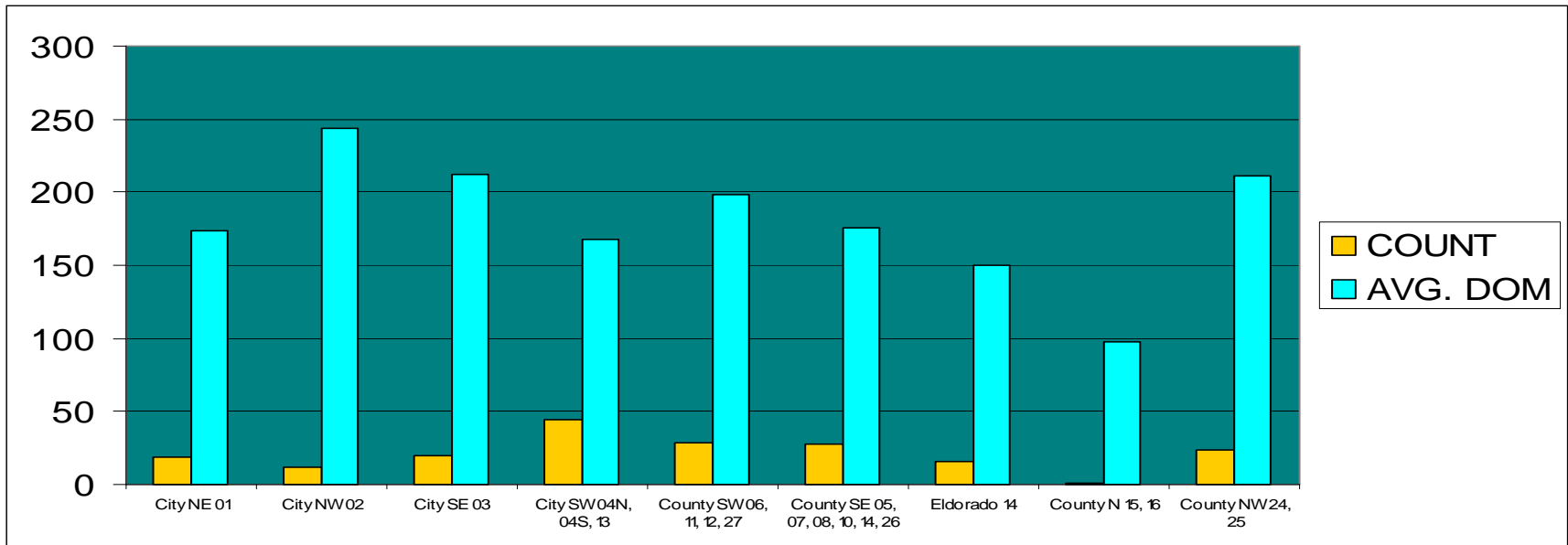
2009 1st Quarter Median Prices by Area

City NE 01	\$605,000
City NW 02	\$257,500
City SE 03	\$542,500
City SW 04N, 04S, 13	\$234,950
Total City	\$308,000
County SW 06, 11, 12, 27	\$372,227
County SE 05, 07, 08, 10, 14, 26	\$419,500
Eldorado 14	\$375,000
County N 15, 16	\$343,000
County NW 24, 25	\$829,500
Total County	\$440,000
Total City and County	\$382,563

2008 1st Quarter Median Prices by Area

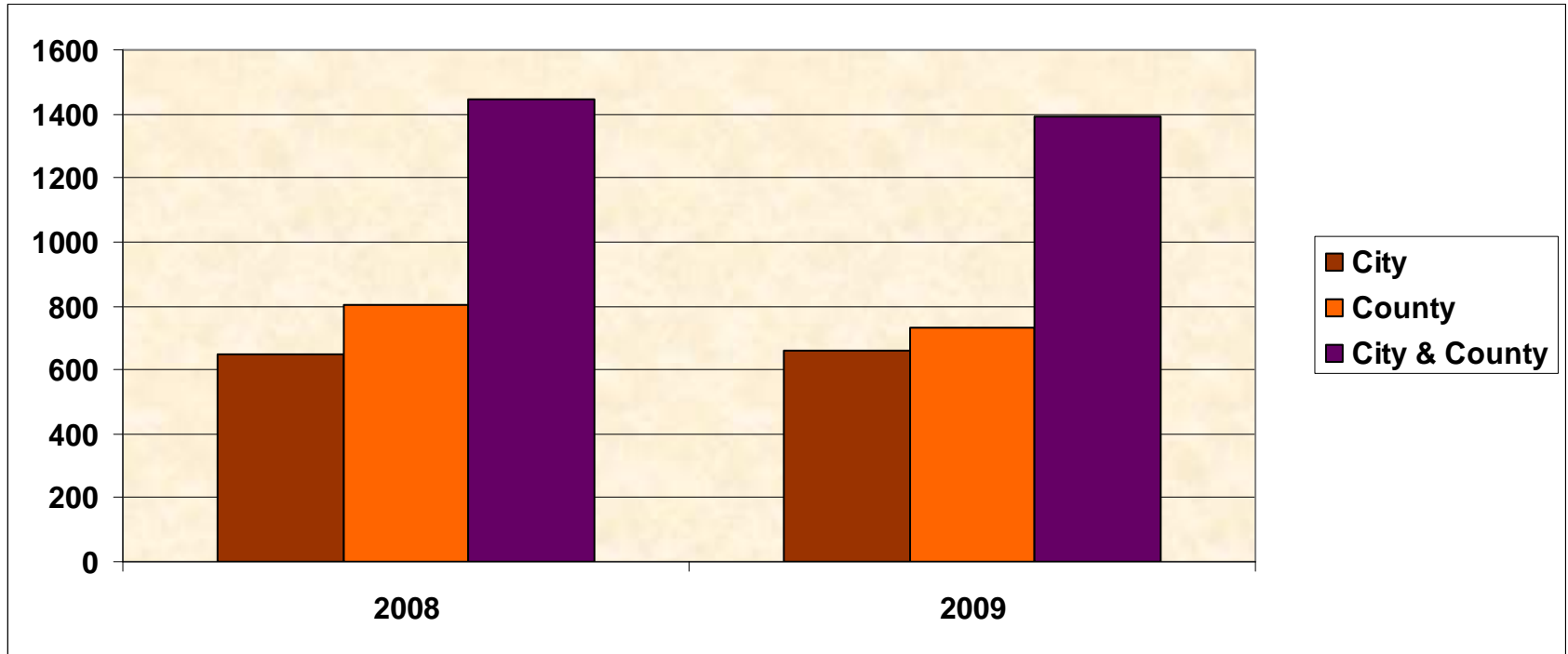
City NE 01	\$710,000
City NW 02	\$288,875
City SE 03	\$588,054
City SW 04N, 04S, 13	\$264,000
Total City	\$301,500
County SW 06, 11, 12, 27	\$305,515
County SE 05, 07, 08, 10, 14, 26	\$490,000
Eldorado 14	\$349,000
County N 15, 16	\$1,997,174
County NW 24, 25	\$839,000
Total County	\$480,000
Total City and County	\$353,900

Single Family DOM and Number Sold, 1st Quarter, 2009



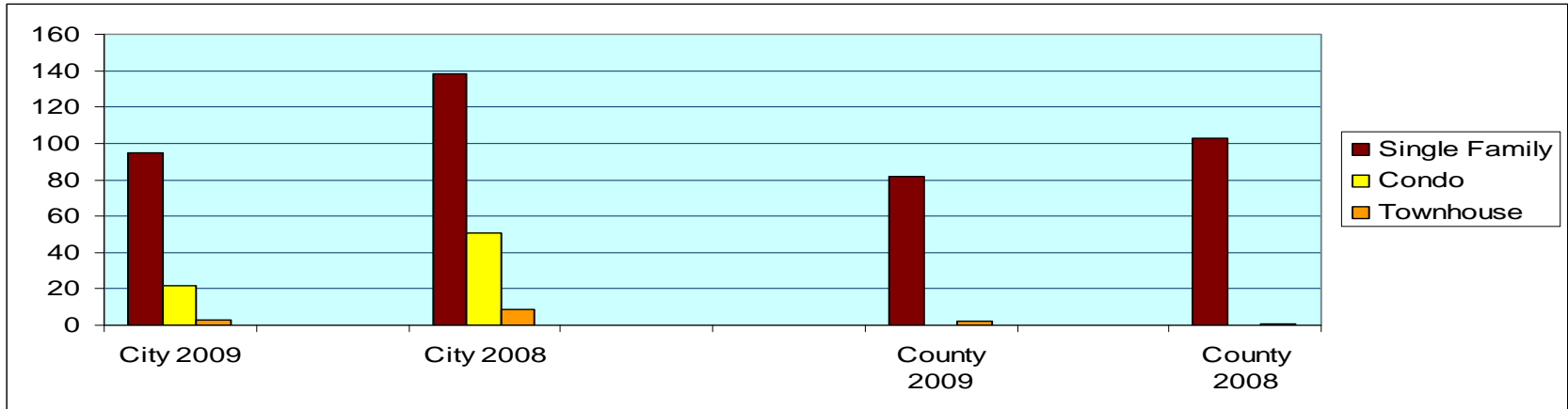
AREA	COUNT	AVG. DOM	AREA	COUNT	AVG. DOM
1Q 2009			1Q 2008		
City NE 01	19	174	City NE 01	15	214
City NW 02	12	244	City NW 02	4	131
City SE 03	20	212	City SE 03	34	190
City SW 04N, 04S, 13	44	168	City SW 04N, 04S, 13	85	153
County SW 06, 11, 12, 27	29	198	County SW 06, 11, 12, 27	35	175
County SE 05, 07, 08, 10, 14, 26	28	176	County SE 05, 07, 08, 10, 14, 26	37	163
Eldorado 14	16	150	Eldorado 14	21	140
County N 15, 16	1	98	County N 15, 16	47	107
County NW 24, 25	24	211	County NW 24, 25	27	275

ACTIVE LISTINGS MARCH 2009 – SINGLE FAMILY



	Mar-09	Mar-08	Dec-08
City	662	647	617
County	731	801	717
City & County	1393	1448	1334

Total Units Sold First Quarter 2008 vs 2009, City and County



**City
2009**

**City
2008**

**County
2009**

**County
2008**

Single Family

95

138

Single Family

82

103

Condo

22

51

Condo

0

0

Townhouse

3

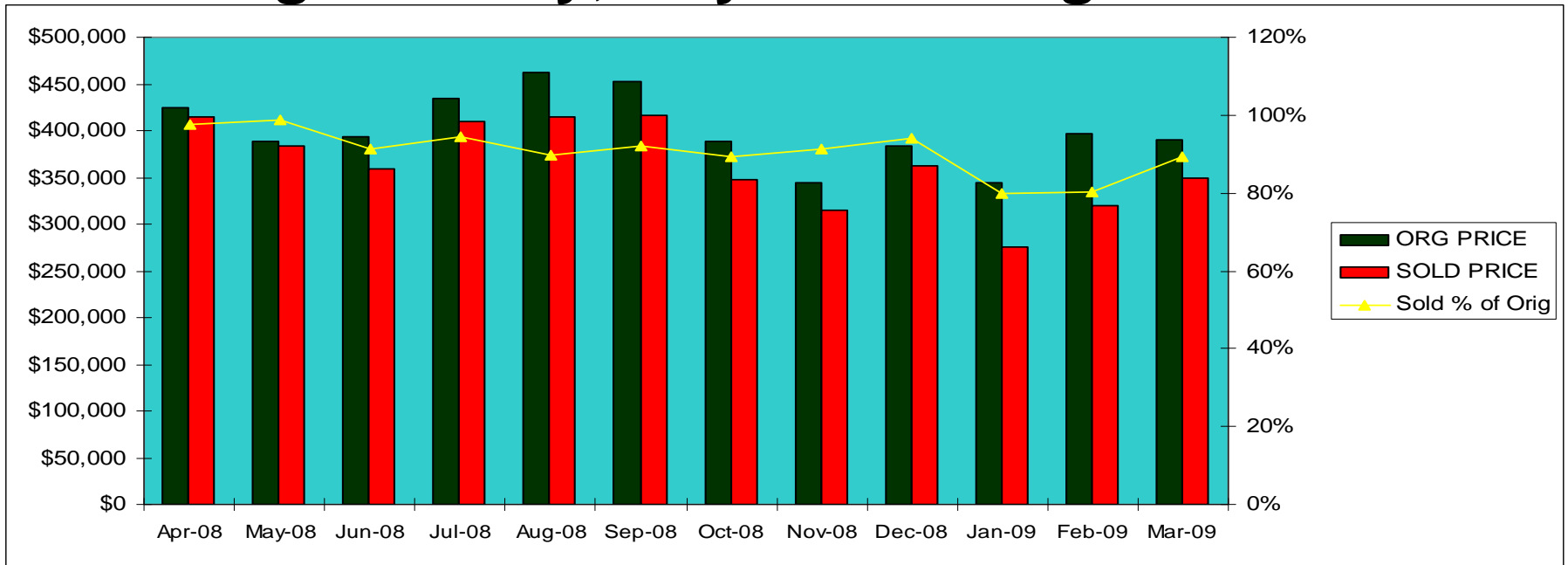
9

Townhouse

2

1

Single Family, City - % of Original Price



ORG PRICE

SOLD PRICE

Sold % of Orig

Apr-08	\$425,000	\$415,000	98%
May-08	\$389,000	\$384,000	99%
Jun-08	\$393,000	\$358,500	91%
Jul-08	\$434,000	\$409,500	94%
Aug-08	\$461,500	\$414,000	90%
Sep-08	\$452,000	\$417,000	92%
Oct-08	\$388,500	\$347,500	89%
Nov-08	\$345,000	\$315,000	91%
Dec-08	\$384,000	\$361,750	94%
Jan-09	\$345,000	\$276,000	80%
Feb-09	\$397,000	\$319,000	80%
Mar-09	\$389,950	\$348,500	89%