

Santa Fe



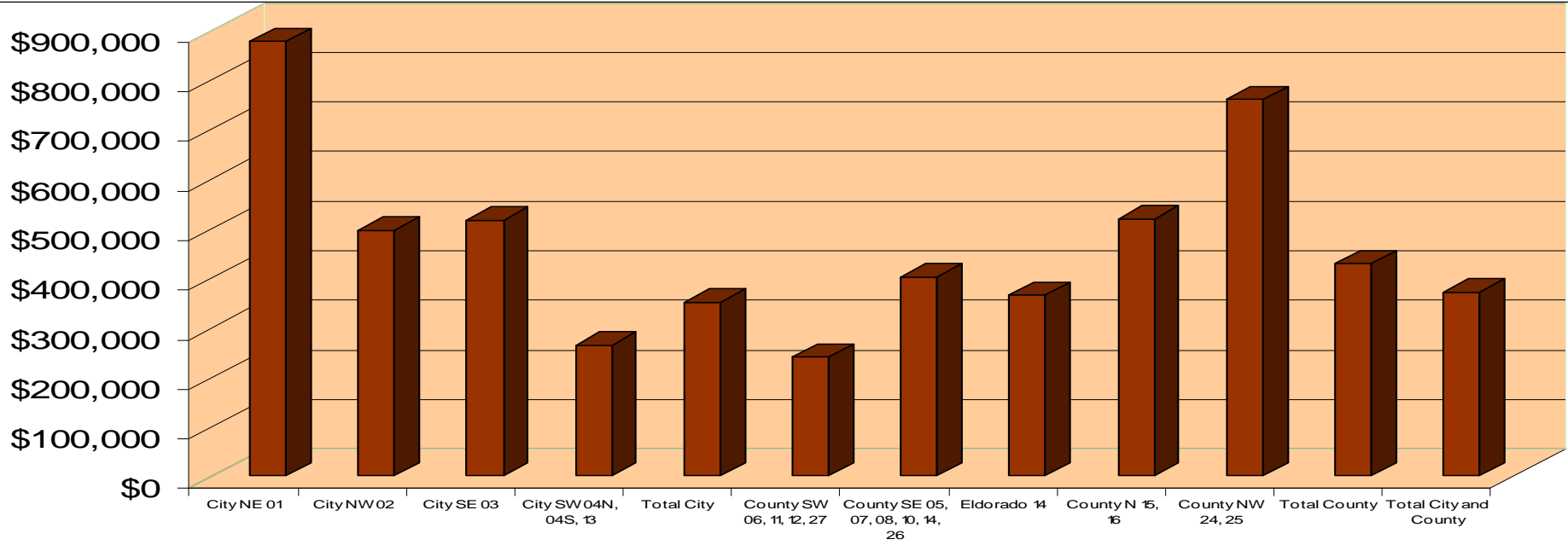
Association of REALTORS®

Fourth Quarter, 2008

Sales Statistics

Santa Fe Association of Realtors ®

Median Sold Prices, 4th Quarter, 2008, Single Family



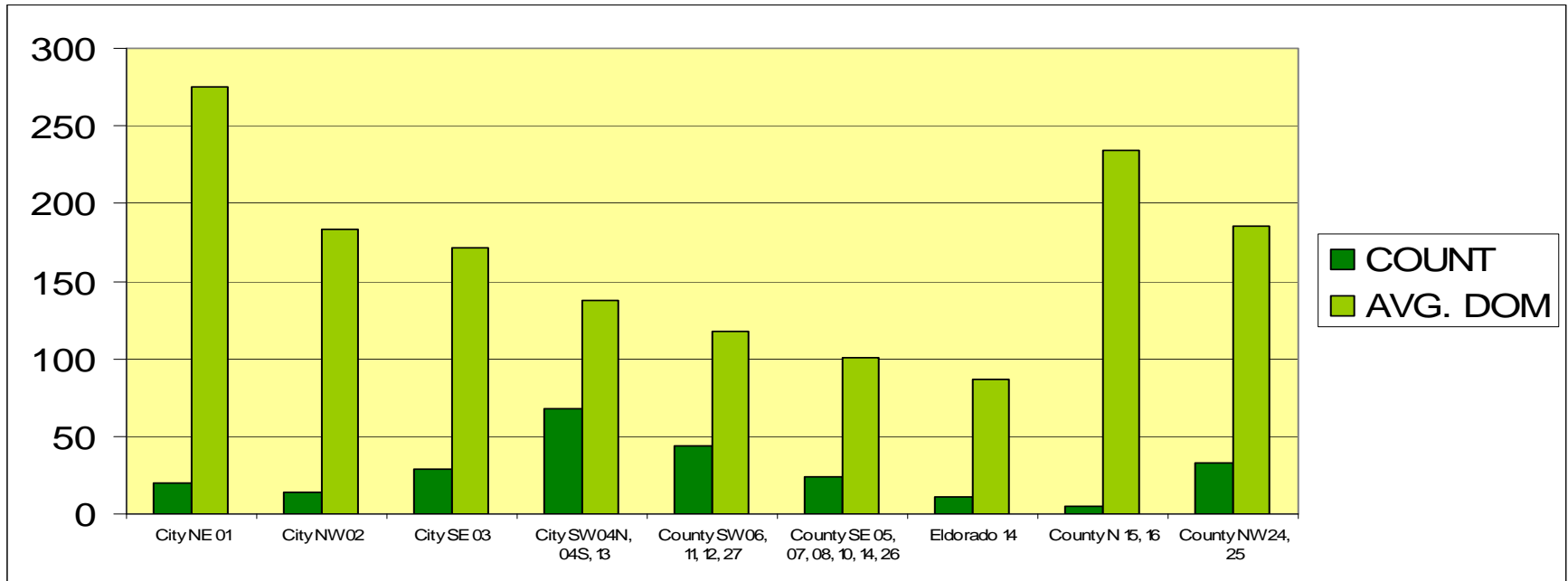
2008 4th Quarter Median Prices by Area

City NE 01	\$875,000
City NW 02	\$494,250
City SE 03	\$515,000
City SW 04N, 04S, 13	\$263,000
Total City	\$350,000
County SW 06, 11, 12, 27	\$239,469
County SE 05, 07, 08, 10, 14, 26	\$400,000
Eldorado 14	\$364,000
County N 15, 16	\$517,500
County NW 24, 25	\$757,000
Total County	\$427,500
Total City and County	\$370,000

2007 4th Quarter Median Prices by Area

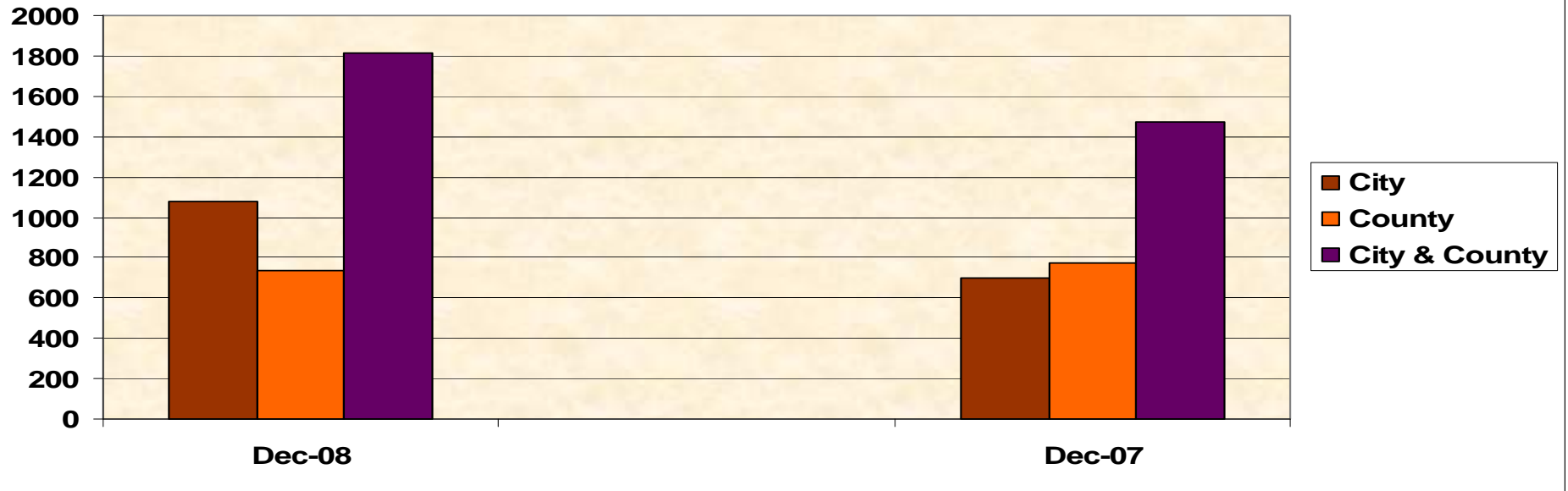
City NE 01	\$697,500
City NW 02	\$318,000
City SE 03	\$730,750
City SW 04N, 04S, 13	\$284,000
Total City	\$350,000
County SW 06, 11, 12, 27	\$316,058
County SE 05, 07, 08, 10, 14, 26	\$457,500
Eldorado 14	\$391,000
County N 15, 16	\$425,000
County NW 24, 25	\$910,000
Total County	\$549,125
Total City and County	\$433,500

Single Family DOM and Number Sold, 4th Quarter, 2008



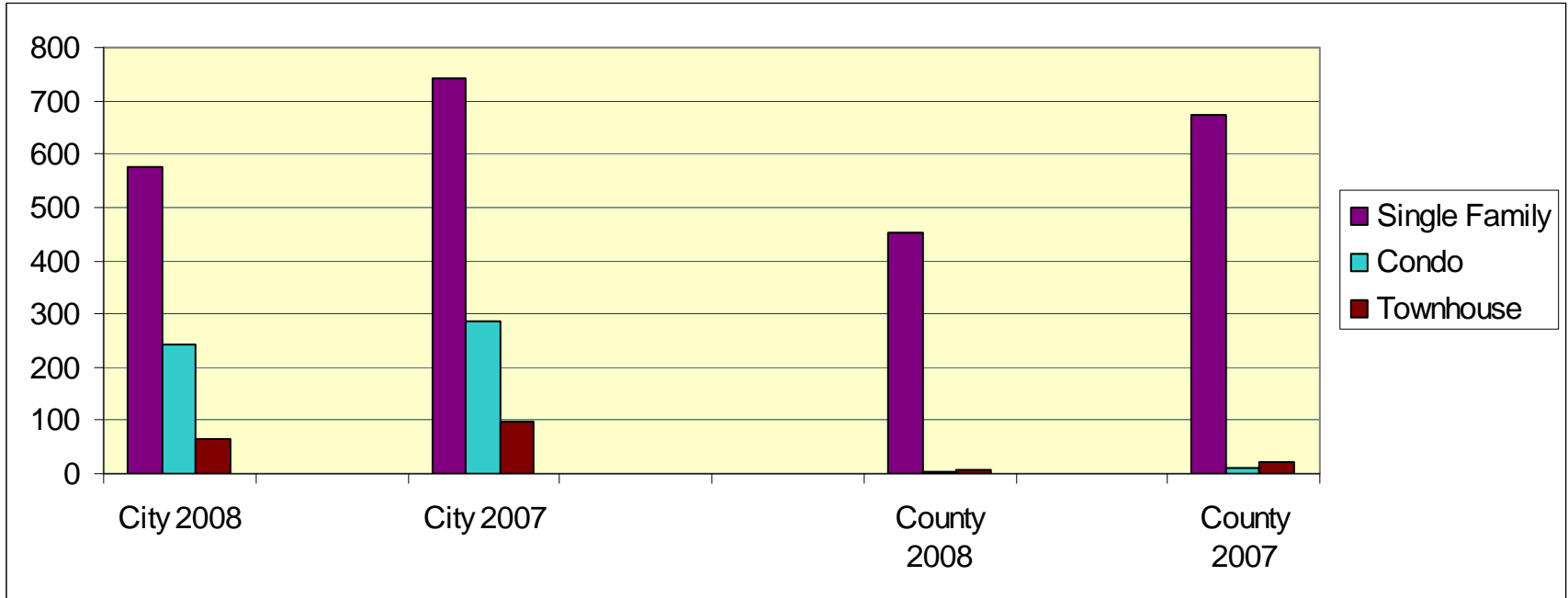
AREA	COUNT	AVG. DOM	AREA	COUNT	AVG. DOM
4Q 2008			4Q 2007		
City NE 01	20	275	City NE 01	22	207
City NW 02	14	183	City NW 02	12	113
City SE 03	29	171	City SE 03	28	181
City SW 04N, 04S, 13	68	138	City SW 04N, 04S, 13	79	128
County SW 06, 11, 12, 27	44	118	County SW 06, 11, 12, 27	29	170
County SE 05, 07, 08, 10, 14, 26	24	101	County SE 05, 07, 08, 10, 14, 26	51	137
Eldorado 14	11	87	Eldorado 14	26	111
County N 15, 16	5	234	County N 15, 16	7	133
County NW 24, 25	33	185	County NW 24, 25	45	227

ACTIVE LISTINGS DECEMBER 2008



	Dec-08	Dec-07	Sep-08
City	1080	698	1327
County	736	774	931
City & County	1816	1472	2258

Total Units Sold 2007 vs 2008, City and County



City 2008

City 2007

County 2008

County 2007

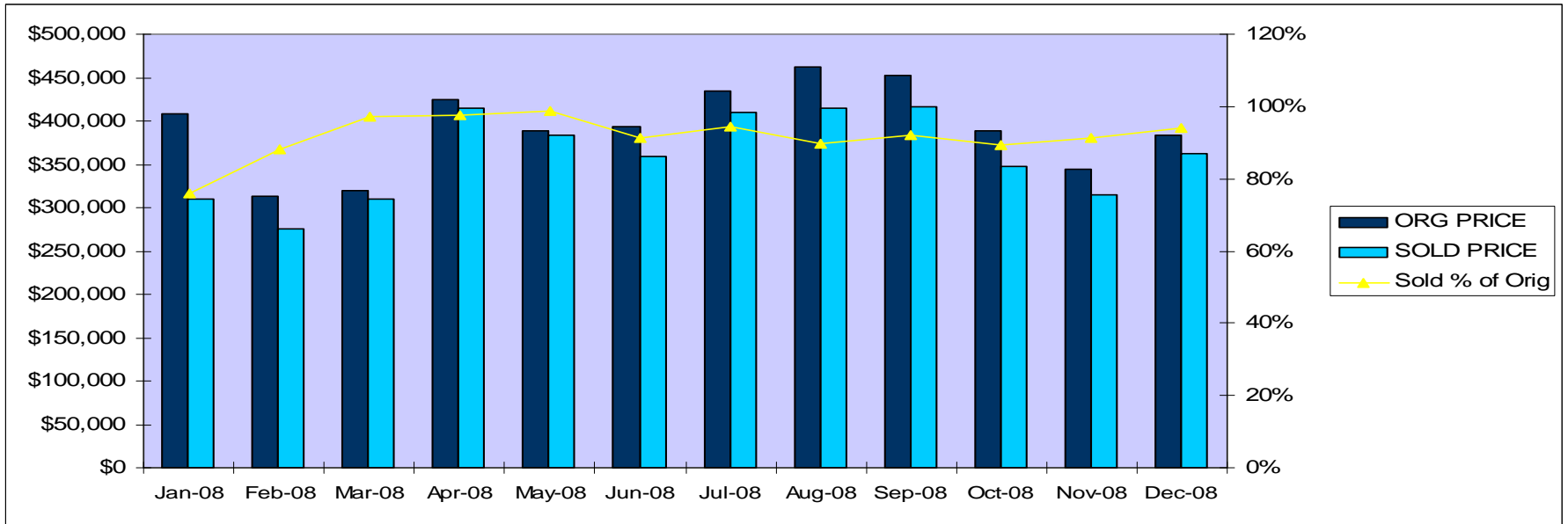
Single Family 577
 Condo 241
 Townhouse 65

742
 285
 98

Single Family 452
 Condo 4
 Townhouse 7

674
 11
 20

Single Family, City - % of Original Price



ORG PRICE

SOLD PRICE

Sold % of Orig

Jan-08	\$409,000	\$310,000	76%
Feb-08	\$312,500	\$275,742	88%
Mar-08	\$319,000	\$310,605	97%
Apr-08	\$425,000	\$415,000	98%
May-08	\$389,000	\$384,000	99%
Jun-08	\$393,000	\$358,500	91%
Jul-08	\$434,000	\$409,500	94%
Aug-08	\$461,500	\$414,000	90%
Sep-08	\$452,000	\$417,000	92%
Oct-08	\$388,500	\$347,500	89%
Nov-08	\$345,000	\$315,000	91%
Dec-08	\$384,000	\$361,750	94%

Please Note: Error - 3Q - numbers included County