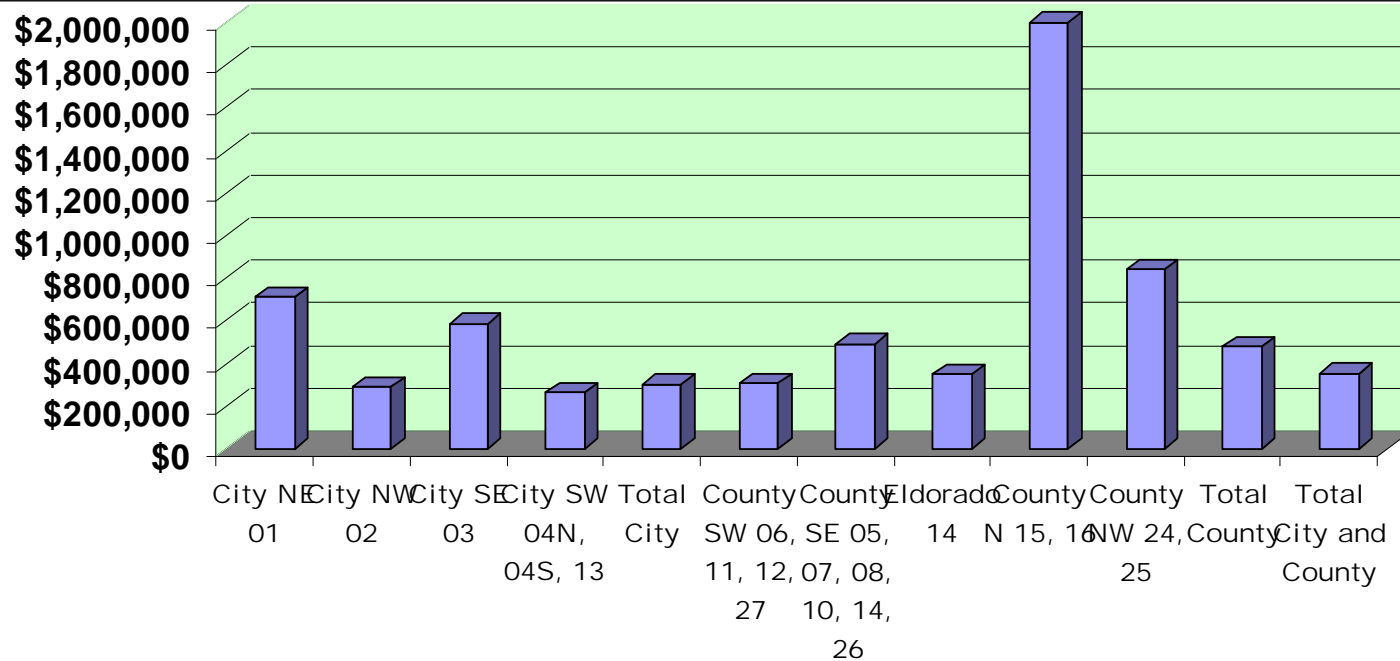




First Quarter, 2008  
Sales Statistics

Santa Fe Association of Realtors ®

# Median Sold Prices, 1st Quarter, 2008, Single Family



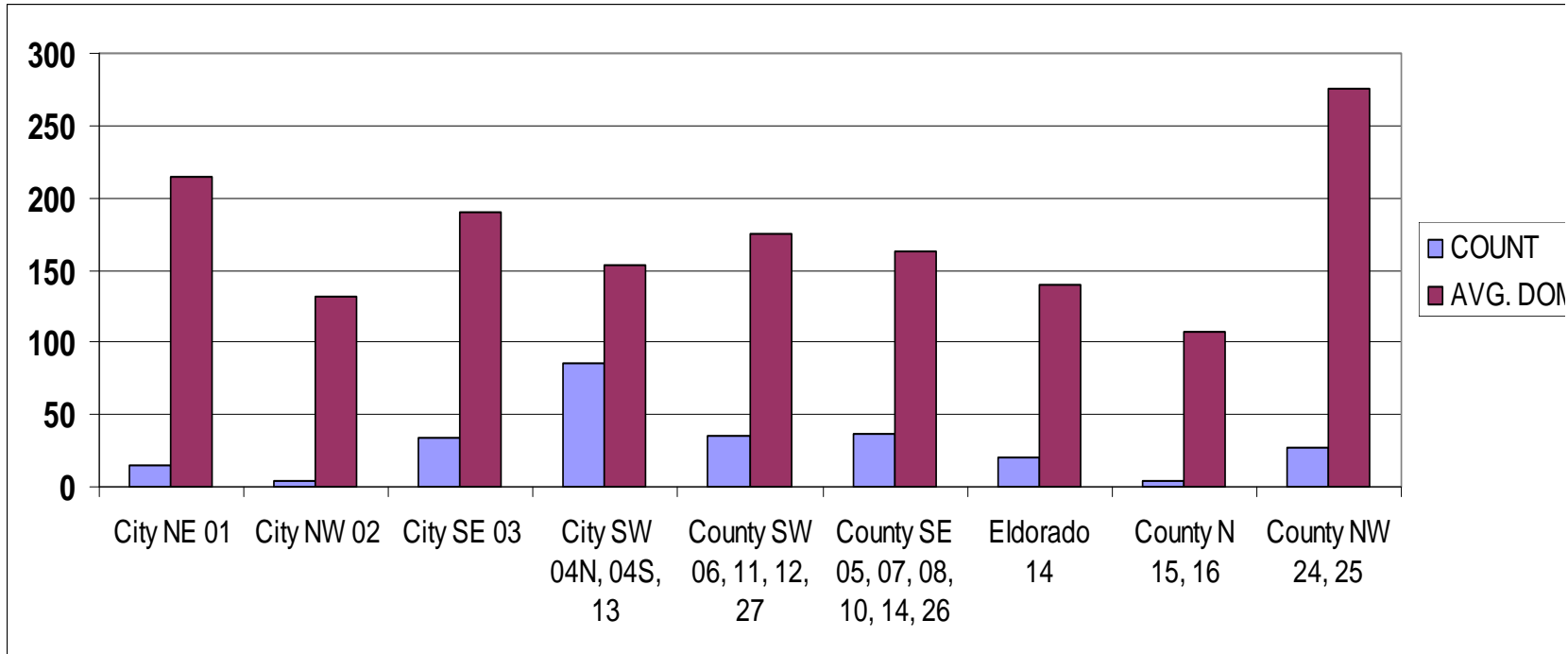
## 2008 1st Quarter Median Prices by Area

City NE 01	\$710,000
City NW 02	\$288,875
City SE 03	\$588,054
City SW 04N, 04S, 13	\$264,000
<b>Total City</b>	<b>\$301,500</b>
County SW 06, 11, 12, 27	\$305,515
County SE 05, 07, 08, 10, 14, 26	\$490,000
Eldorado 14	\$349,000
County N 15, 16	\$1,997,174
County NW 24, 25	\$839,000
<b>Total County</b>	<b>\$480,000</b>

## 2007 1st Quarter Median Prices by Area

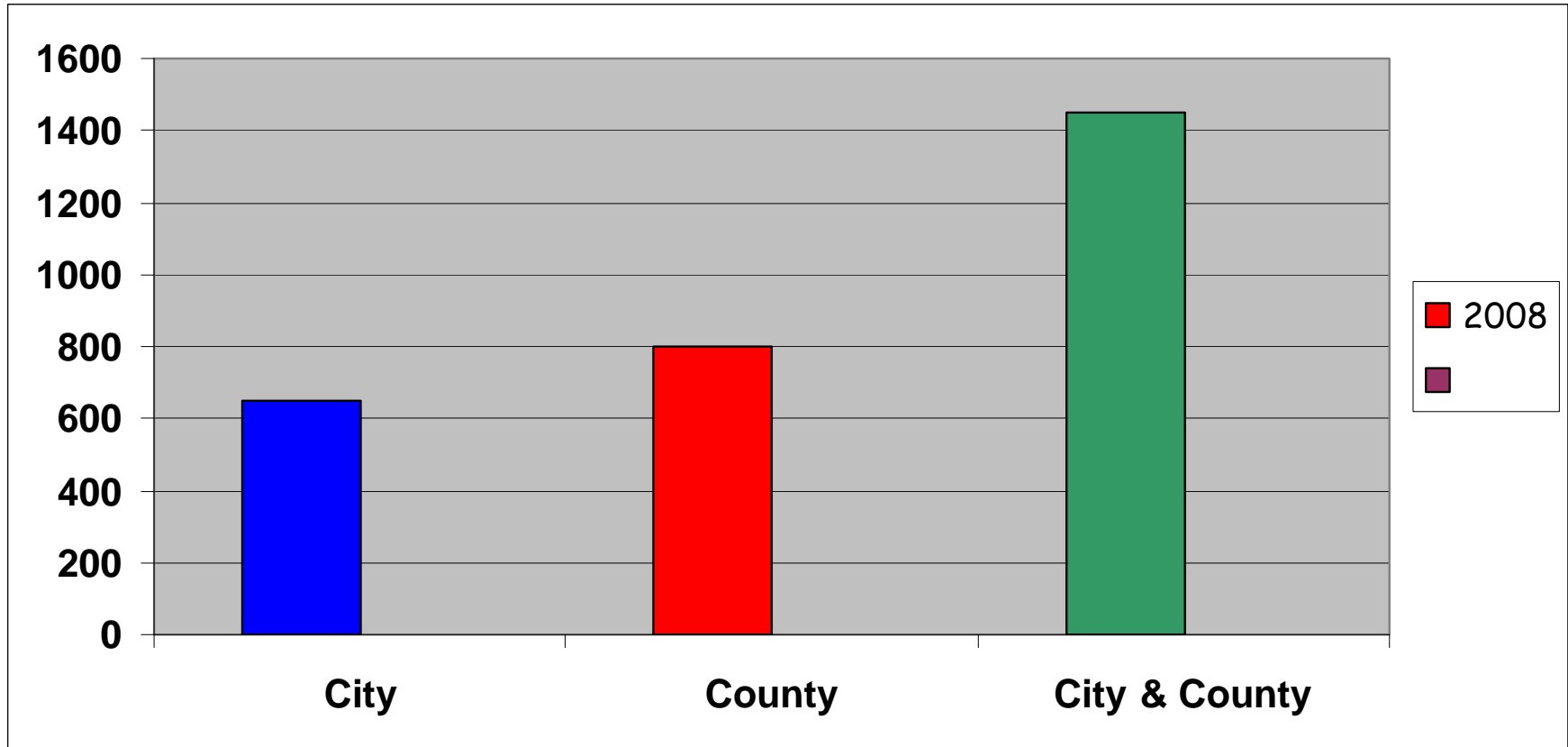
City NE 01	\$850,000
City NW 02	\$373,125
City SE 03	\$625,000
City SW 04N, 04S, 13	\$275,000
<b>Total City</b>	<b>\$354,125</b>
County SW 06, 11, 12, 27	\$380,000
County SE 05, 07, 08, 10, 14, 26	\$475,000
Eldorado 14	\$411,000
County N 15, 16	\$625,000
County NW 24, 25	\$815,000
<b>Total County</b>	<b>\$517,000</b>

# Single Family DOM and Number Sold, 1st Quarter, 2008



<u>AREA</u>	<u>COUNT</u>	<u>AVG. DOM</u>	<u>AREA</u>	<u>COUNT</u>	<u>AVG. DOM</u>
<b>1Q 2008</b>			<b>1Q 2007</b>		
City NE 01	15	214	City NE 01	16	216
City NW 02	4	131	City NW 02	10	190
City SE 03	34	190	City SE 03	31	170
City SW 04N, 04S, 13	85	153	City SW 04N, 04S, 13	85	133
County SW 06, 11, 12, 27	35	175	County SW 06, 11, 12, 27	48	167
County SE 05, 07, 08, 10, 14,	37	163	County SE 05, 07, 08, 10,	53	172
Eldorado 14	21	140	Eldorado 14	29	135
County N 15, 16	4	107	County N 15, 16	11	317
County NW 24, 25	27	275	County NW 24, 25	42	240

# ACTIVE LISTINGS MARCH 2008



2008

City

647

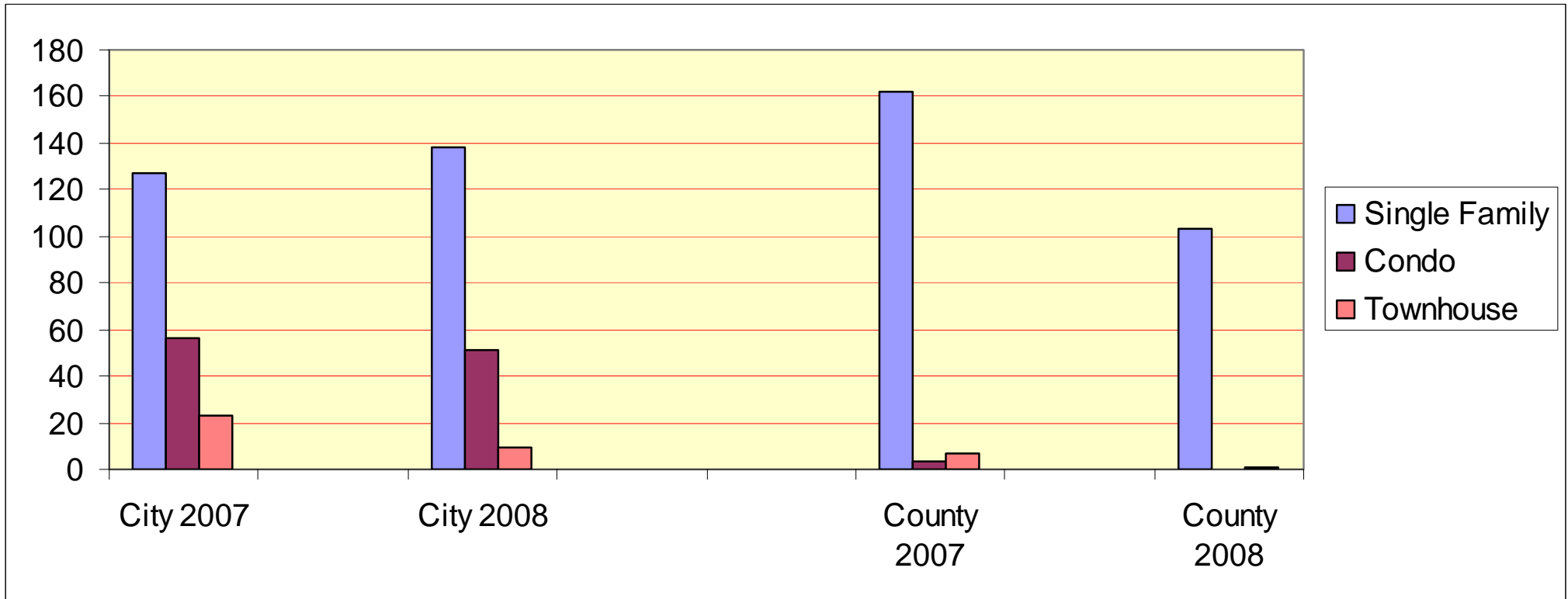
County

801

City & County

1448

# Total Units Sold First Quarter 2007 vs 2008, City and County



## City 2007

## City 2008

## County 2007

## County 2008

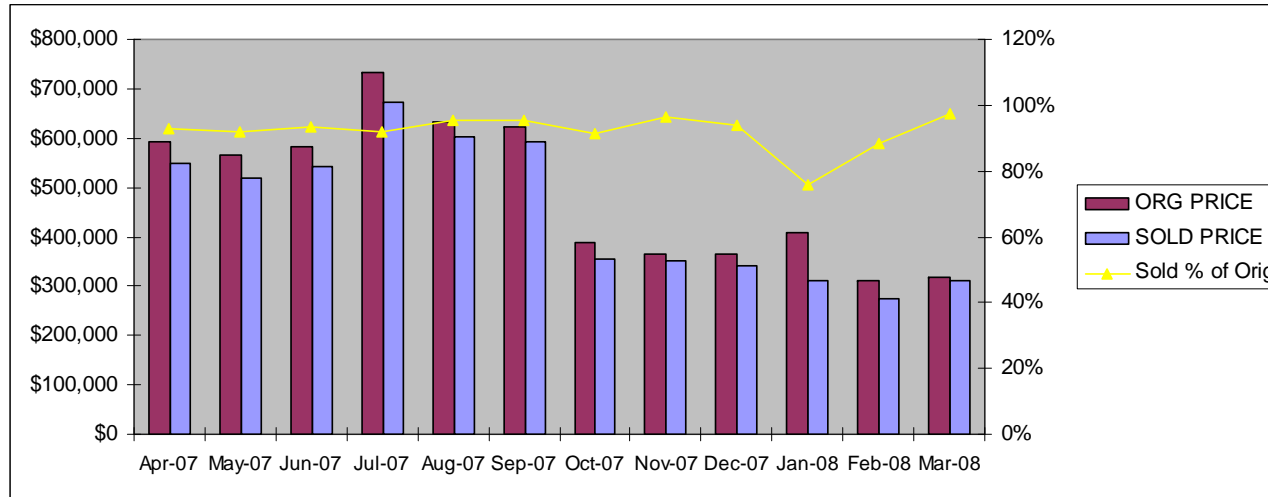
Single Family 127  
 Condo 56  
 Townhouse 23

138  
 51  
 9

Single Family 162  
 Condo 3  
 Townhouse 7

103  
 0  
 1

# Single Family, City - % of Original Price



**ORG PRICE    SOLD PRICE    Sold % of Orig**

Apr-07	\$592,910	\$549,691	93%
May-07	\$565,148	\$519,994	92%
Jun-07	\$582,677	\$543,351	93%
Jul-07	\$732,383	\$671,905	92%
Aug-07	\$631,245	\$601,754	95%
Sep-07	\$620,998	\$591,334	95%
Oct-07	\$389,000	\$355,000	91%
Nov-07	\$364,000	\$350,000	96%
Dec-07	\$365,000	\$342,250	94%
Jan-08	\$409,000	\$310,000	76%
Feb-08	\$312,500	\$275,742	88%
Mar-08	\$319,000	\$310,605	97%